



HEXAGON
PPM



MCT Brattberg 3D CAD library
Guideline for Intergraph Smart 3D

December 19, 2024



Copyright

Copyright© 2004-2019 Intergraph Corporation. All Rights Reserved. Intergraph is part of **Hexagon**.

Notice

This **setup instructions.docx** contains confidential and proprietary information of Hexagon AB, Intergraph Corporation, Intergraph Canada Ltd., and/or relevant third parties, which is protected by copyright law, trade secret law, and international treaty, and may not be provided or otherwise made available without proper authorization. Said confidential and proprietary information shall not be disclosed outside Intergraph (Schweiz) AG and shall not be duplicated, used or disclosed, in whole or in part, for any purpose other than as stated in the Terms of this Admin Instructions for MCT Brattberg CableTray.pdf. Where disclosure of Intergraph Corporation, Intergraph Canada Ltd., and/or relevant third-party confidential and proprietary information requires review by other third parties, Intergraph (Schweiz) AG shall formally request permission from an authorized legal representative of Intergraph Corporation, Process, Power & Marine Division (PP&M) to duplicate, use, or disclose in whole or in part the said confidential or proprietary information.

Trademarks

Intergraph®, the Intergraph logo®, Intergraph Smart®, SmartPlant®, SmartMarine, SmartSketch®, SmartPlant Cloud®, PDS®, FrameWorks®, I-Route, I-Export, ISOGEN®, SPOOLGEN, SupportManager®, SupportModeler®, TANK, PV-Elite, CADWorx®, CADWorx DraftPro®, GTSTRUDL®, and CAESAR II® are trademarks or registered trademarks of Intergraph Corporation or its affiliates, parents, subsidiaries. Microsoft®, Excel®, Access®, Active Directory®, Vista®, Windows®, Forefront®, Office 365, XP Professional, and Azure are registered trademarks or trademarks of Microsoft Corporation. Oracle® is a registered trademark of Oracle Corporation. MicroStation® is a registered trademark of Bentley Systems, Inc. Both SAP® and SAP NetWeaver® are registered trademarks of SAP AG in Germany and in several other countries. Other brands and product names are trademarks of their respective owners.

Contents

Introduction	3
Prerequisites	3
Installation Steps	3
Identify the Active Symbol Share	4
Copy the Symbol Icons	5
Copy the DLLs	6
Bulkload Microsoft® Excel® Workbooks for Catalog	7
To New Catalog	7

Introduction

The Admin Instructions for MCTBrattberg_Delivery(19-12-2024) package is designed to work with Intergraph® Smart 3D (Smart 3D) v13.1 and above. For best results, users should install the latest Smart 3D Hot Fix.

Users with current Smart 3D maintenance are encouraged to visit [Intergraph® Smart Support](#) for more information and to access the following:

- Service Requests (Reference your maintenance agreement for Support hours.)
- Knowledge Base
- Technical Tips
- Compatibility Matrices
- Downloads
- Product Announcements
- Service Packs and Fixes
- Technical Notes and Whitepapers
- Freeware Tools and Utilities
- Documentation
- Support Email Notification Subscription

Prerequisites

Please download the MCT Brattberg package from the Below OneDrive Link.

Installation Steps

The following subsections describe the library, software and file installation for use of the MCT Brattberg Cable & Pipe transits

Smart 3D Version: Smart 3D v13.1

Load DLLs and XLS Files

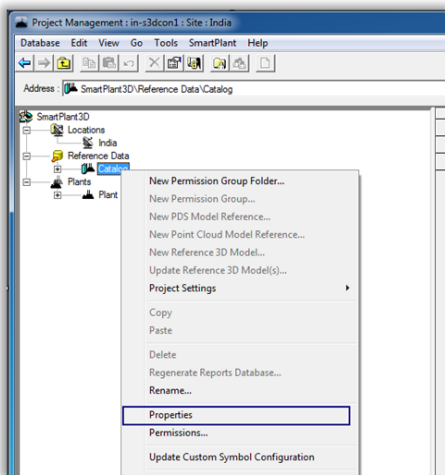
Deliver the DLLs and XML files to the symbol share of your Smart 3D server. The XLS files can be placed in any folder; the folders suggested in the following step-by-step instructions are the Smart 3D default folders.

Complete the steps in the following subsections to load the DLLs and XLS files for the MCTBrattberg_Delivery(19-12-2024) package.

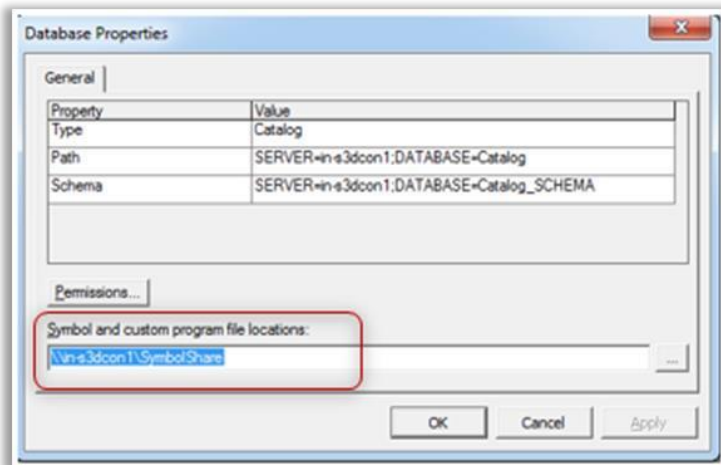
Identify the Active Symbol Share

Load the delivery package in the active symbol share. Complete the following steps to determine the active symbol share name path:

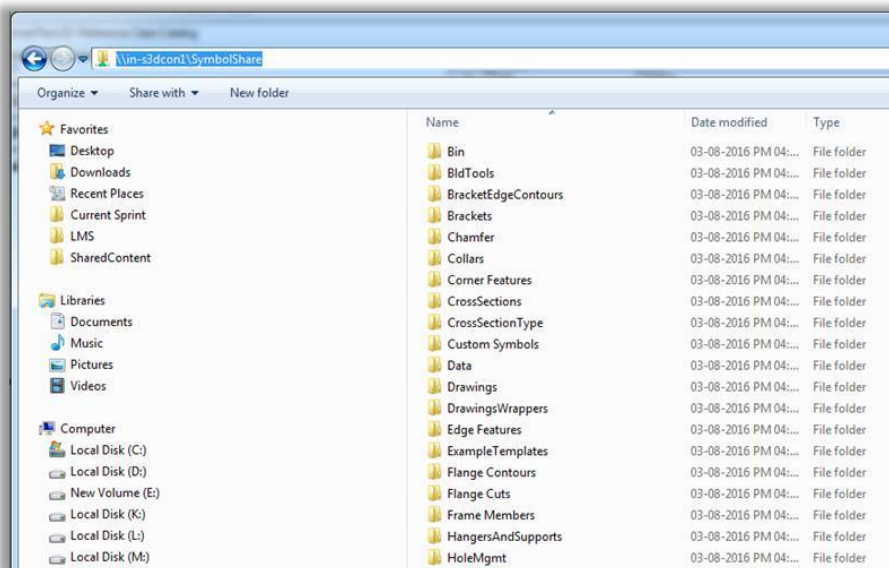
1. Open Project Management and select the Catalog database in which the package is to be loaded.
2. To view the symbol share name in Smart 3D:
 - a. Right click the Catalog Name and select **Properties**.



- b. The **Database Properties** dialog box will be open. Copy the location shown in **Symbol and custom program file locations** field.

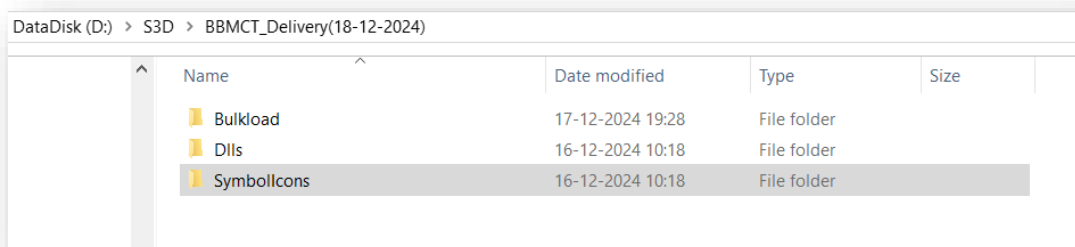


- c. Open Windows/File explorer and paste the copied location in the Address bar to open the active symbol share folder.



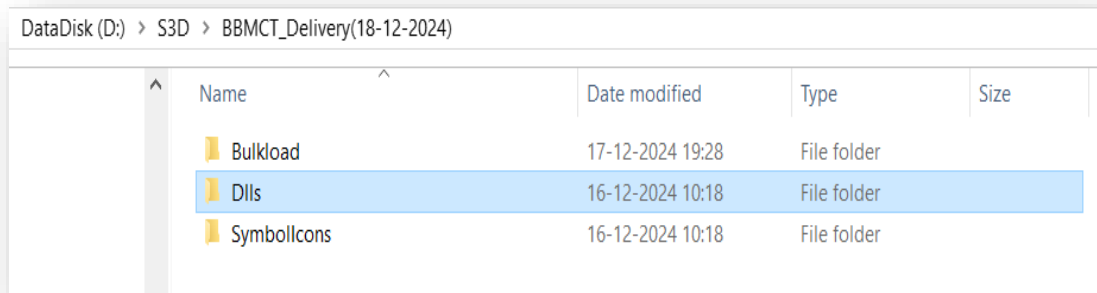
Copy the Symbol Icons

Copy the **image files** from the MCTBrattberg_Delivery(19-12-2024)\SymbolIcons\ to your <Symbol share Directory>\SymbolIcons\ folder.

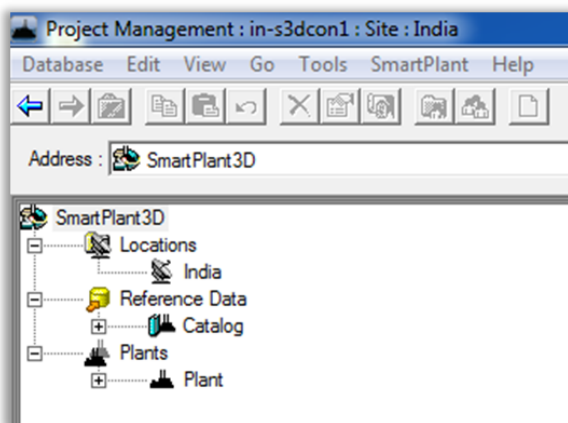


Copy the DLLs

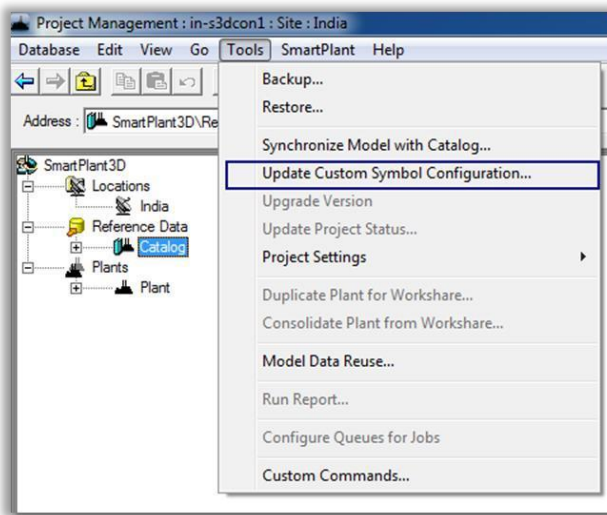
1. Copy the **dlls** from the MCTBrattberg_Delivery(19-12-2024)\DLLs\ folder to your <Symbol share Directory>\ CustomSymbols folder.



2. Update the dll system through the **Project Management** environment by selecting the Smart 3D Catalog database as shown below:



- Go to Tools and select Update Custom Symbol Configuration.



- The following message indicates that all the newly placed dlls have been updated.



- Click **OK**.

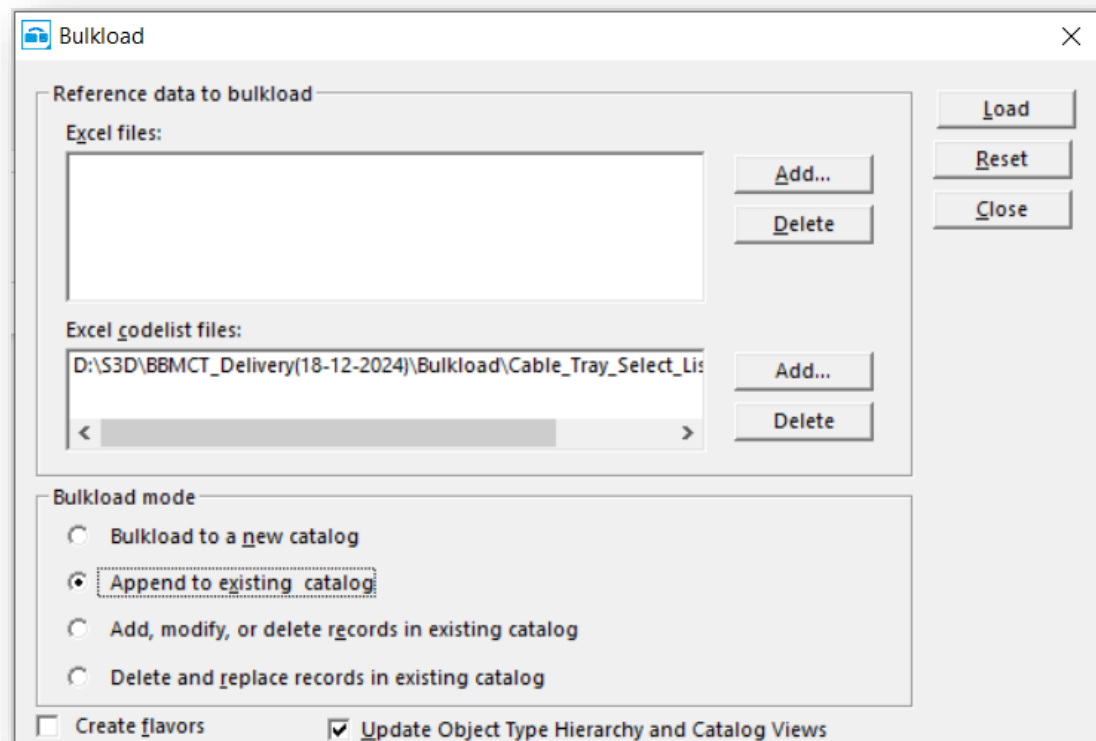
Bulkload Microsoft® Excel® Workbooks for Catalog

To New Catalog

- Using the **Append to existing catalog** function, bulkload the following "Cable_Tray_Select_Lists_CodeList.xls " Excel workbook from the MCTBrattberg_Delivery(19-12-2024)\Bulkload\Codelist

Note: Bulkload warnings like Data already exists in the CodeList Table can be ignored.

File Name to be Added	Location in the Bulkload Tool
Cable_Tray_Select_Lists_CodeList	Excel Codelist Files

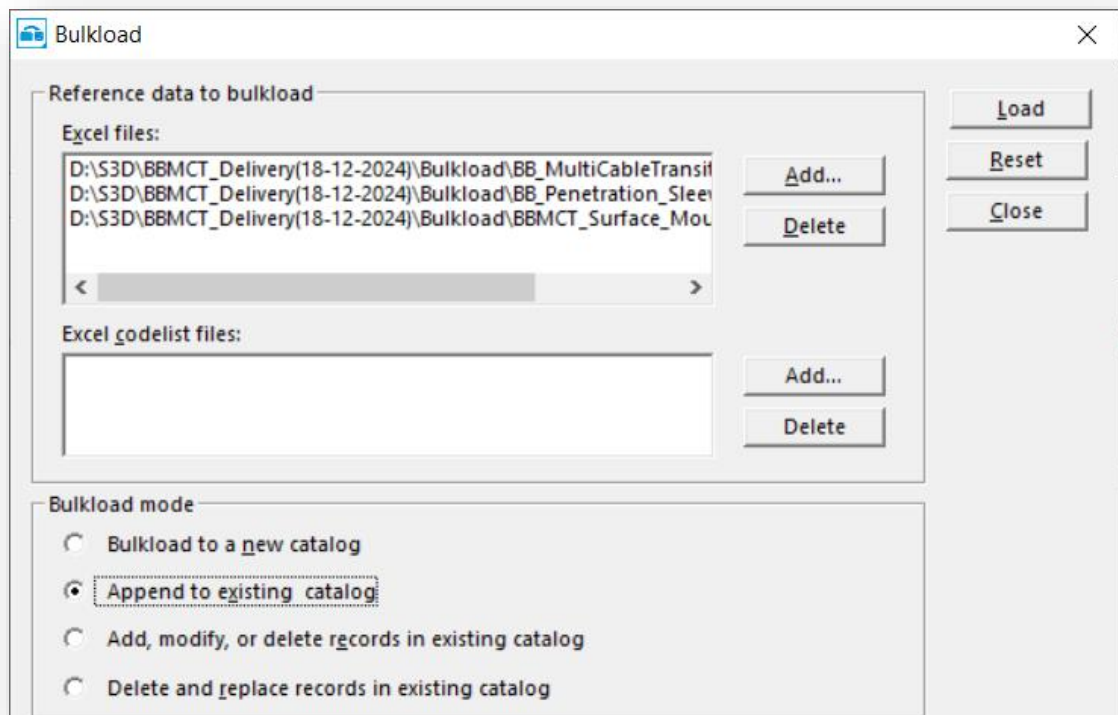


2. Based on the requirement, bulkload one or all of the following Excel workbooks from the MCTBrattberg_Delivery(19-12-2024)\Bulkload\ using the **Append to existing catalog** function. The following image shows loading all the workbooks.

Note: Bulkload warnings like cannot create object, Object already exists in the database and Unable to Create the PartClass, A PartClass already exists with the given name in the Database can be ignored. Also, warnings like PartClass length are exceeding 30 characters which will cause problem while converting database to Oracle is coming from the existing the package.

Note: Bulkload the below files in given order. Specifications need to be loaded initially as shown below.

File Name to be Added	Location in the Bulkload Tool
BB_MultiCableTransit.xls	Excel Files
BB_Penetration_Sleeve.xls	Excel Files
BBMCT_Surface_Mounted_Pipe_Sleeve.xls	Excel Files



The screenshot shows the 'Bulkload' dialog box with the following configuration:

- Reference data to bulkload**
 - Excel files:** A list box containing three file paths:
 - D:\S3D\BBMCT_Delivery(18-12-2024)\Bulkload\BB_MultiCableTransit
 - D:\S3D\BBMCT_Delivery(18-12-2024)\Bulkload\BB_Penetration_Sleeve
 - D:\S3D\BBMCT_Delivery(18-12-2024)\Bulkload\BBMCT_Surface_Mou
 - Excel codelist files:** An empty list box.
- Bulkload mode**
 - Bulkload to a new catalog
 - Append to existing catalog
 - Add, modify, or delete records in existing catalog
 - Delete and replace records in existing catalog

Buttons on the right side of the dialog include: Load, Reset, Close, Add... (for Excel files), Delete (for Excel files), Add... (for Excel codelist files), and Delete (for Excel codelist files).