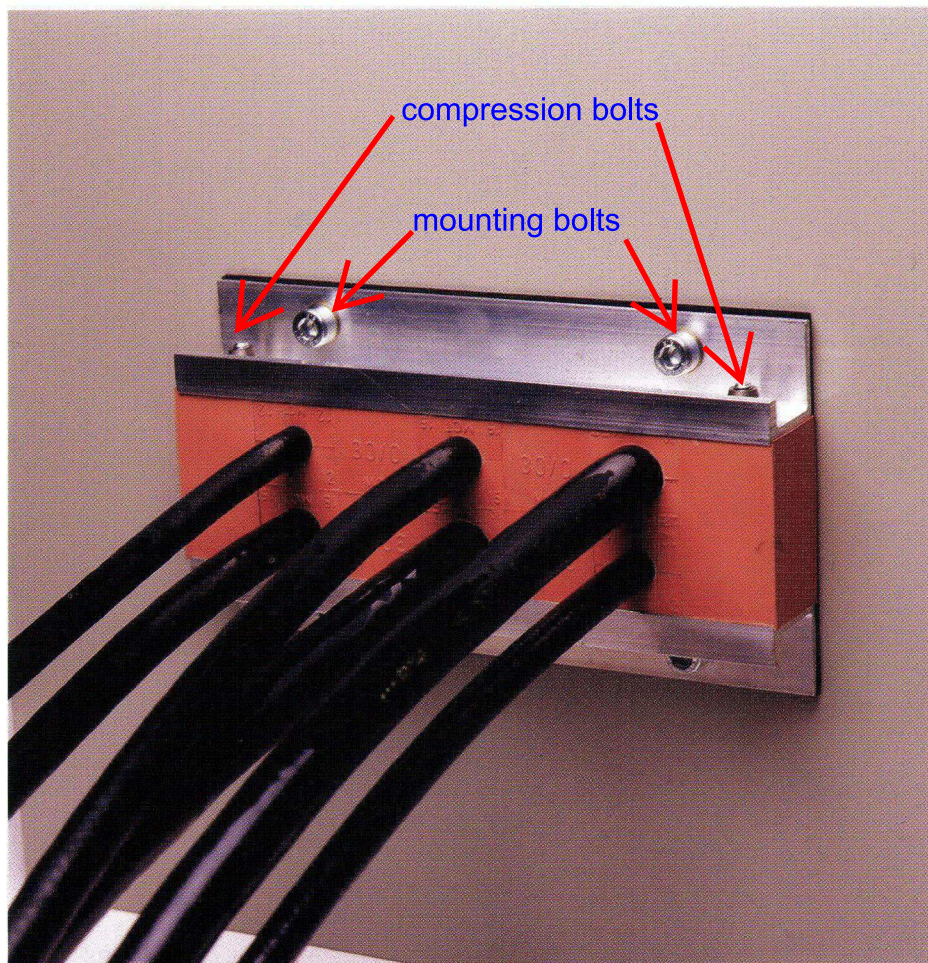


ALF Cabinet Seal



- Tested and Approved
- Easy to install –No special tools
- Available in 4 standard sizes or customer designed
- Complete kit with gasket, bolts and nuts

Installation procedure:

1. Drill hole pattern and cut out for the frame according to table and sketch below.
2. Mount the ALF frame on to your cabinet with the supplied bolts and with the gasket in between the flange and the cabinet.

- Note!** 3. Do not tighten the mounting bolts too much, the frame/flange shall still be able to slide underneath the bolts head.
4. Fill up the frame with cables, insert blocks and spare blocks.
 5. Tighten the compression bolts until the cables are not movable.
 6. Finally tighten the mounting bolts against the cabinet.

Putting safety first

ALF Cabinet Seal

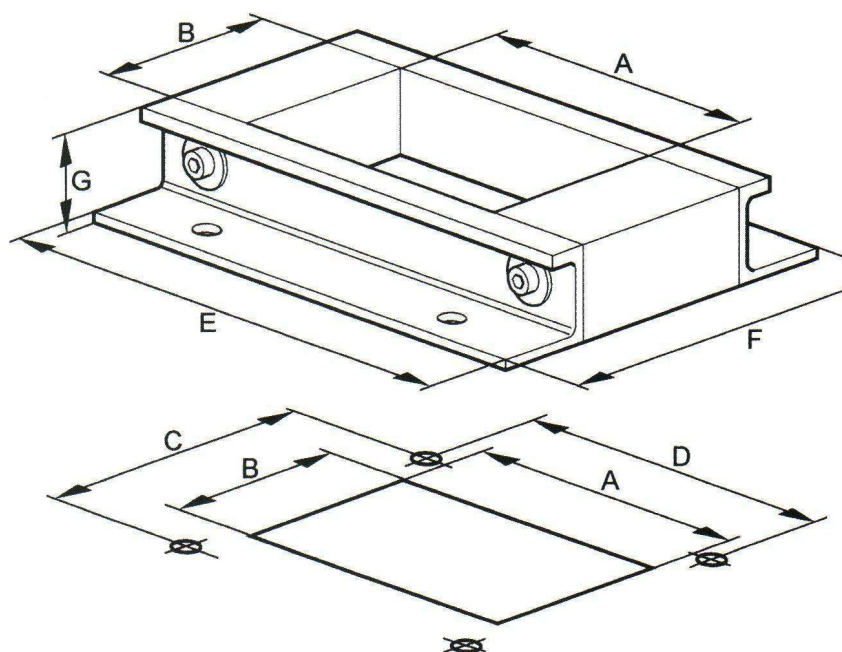
ALF cabinet Seal is a cable penetration for applications where dust- and water tightness are demanded. ALF comes in 4 different standard sizes but can also be customer designed. A lot of cables can be installed in a small area and the big opening even allows connectors and joints to pass through.

The cables are individually sealed off with 30 mm long insert blocks which comes in the same sizes as MCT Brattbergs standard blocks. For full flexibility there is also a range of adjustable AddBlocks.

ALF is compressed with two bolts with a standard allen key and it is easy to open it up for changing or completion of cables.

ALF is available in aluminium or stainless steel and is always supplied in kit form with gasket, bolts and nuts.

Sketch



Table

Size (mm)	A	B	C	D	E	F	G	Hole Ø
ALF 60	60	60	96	60	120	120	30	9
ALF 90	90	60	96	90	150	120	30	9
ALF 120	120	60	96	120	180	120	30	9
ALF 150	150	60	96	150	210	120	30	9

Classified according to:

UL 94VO

UL50 NEMA 3R & 4X & I2 Enclosure

IP 66 / IP 67



www.mctbrattberg.com

MCT Brattberg AB
SE-371 92 Karlskrona
Sweden
Phone: +46-455 37 52 00
Fax: +46-455 37 52 90
E-mail: info@mctbrattberg.se
Website: www.mctbrattberg.se

MCT Brattberg Ltd
Commerce Street
Carrs Industrial Estate Haslingden
Lancashire BB4 5JT
England
Tel: +44 - 170 624 4890
Fax: +44 - 170 624 4891
E-mail: info@mctbrattberg.co.uk

MCT Brattberg Inc.
P.O. Box 374
Spring Tx 77383
USA
Phone: +1 (281) 355 8191
Fax: +1 (281) 355 8393
E-mail: info@brattberginc.com