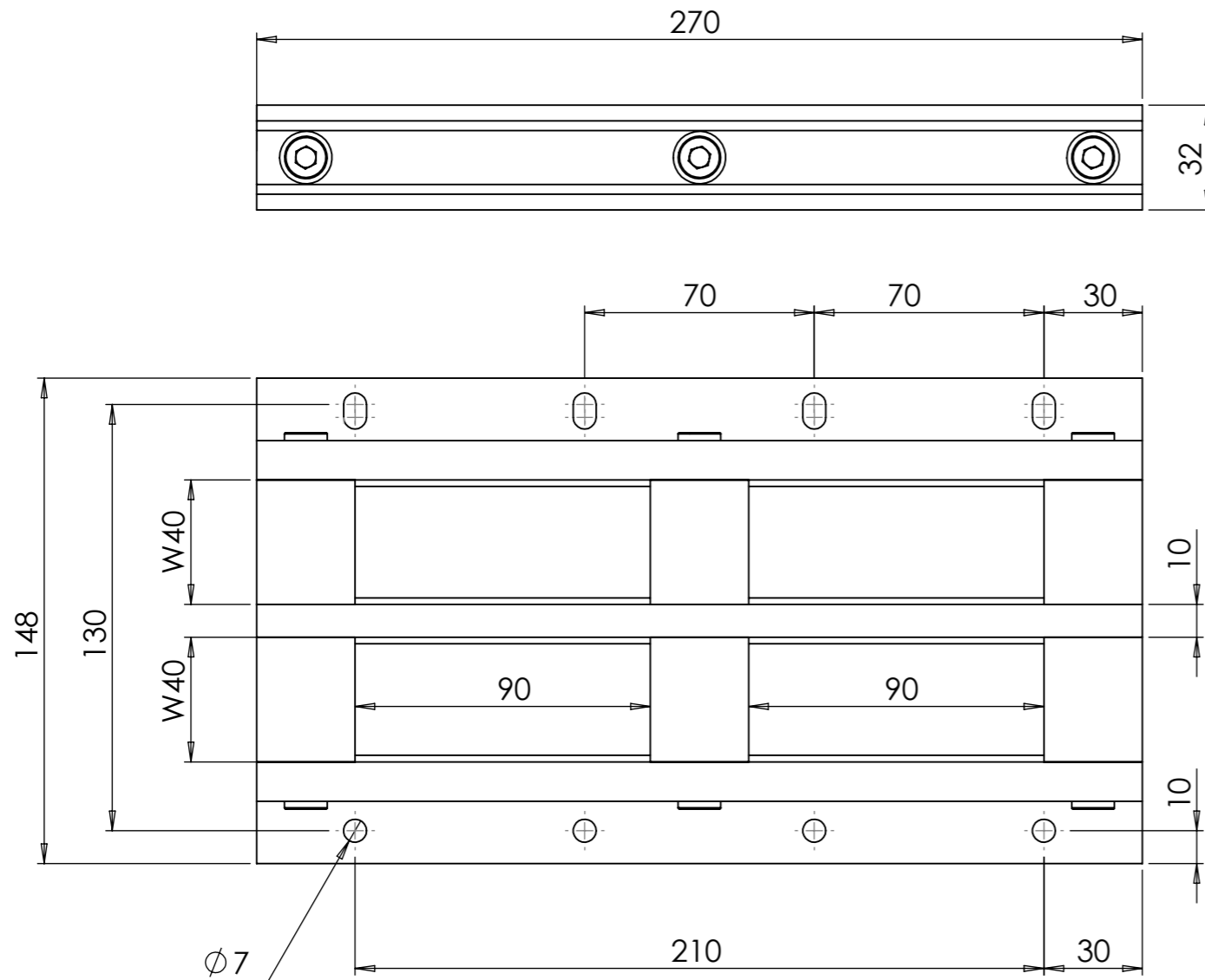
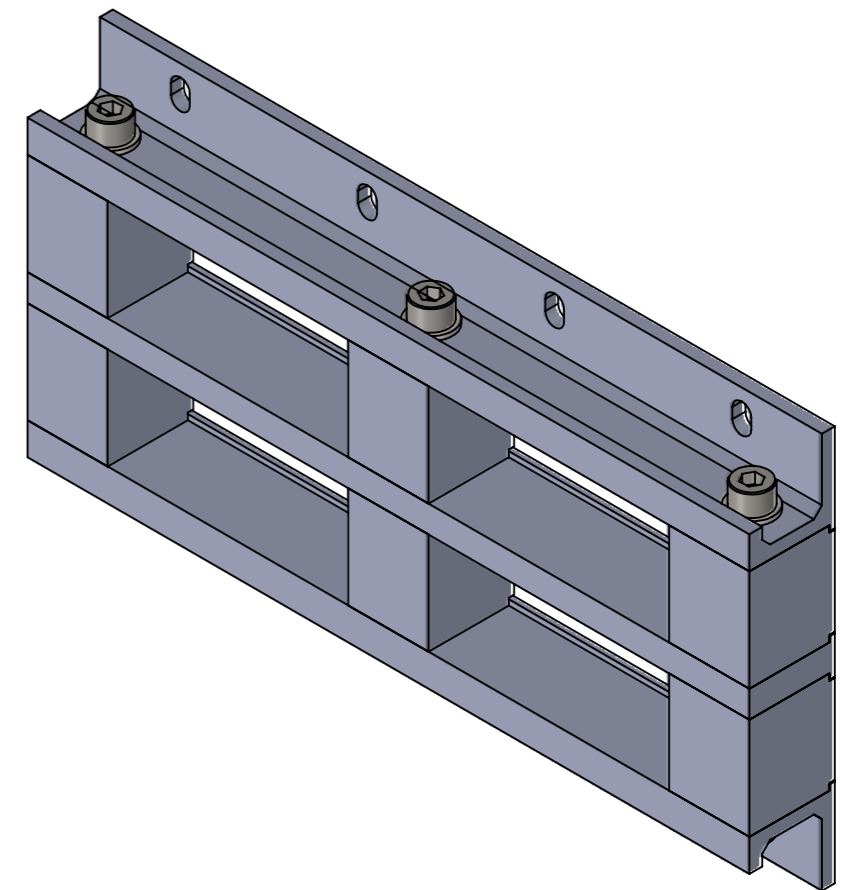


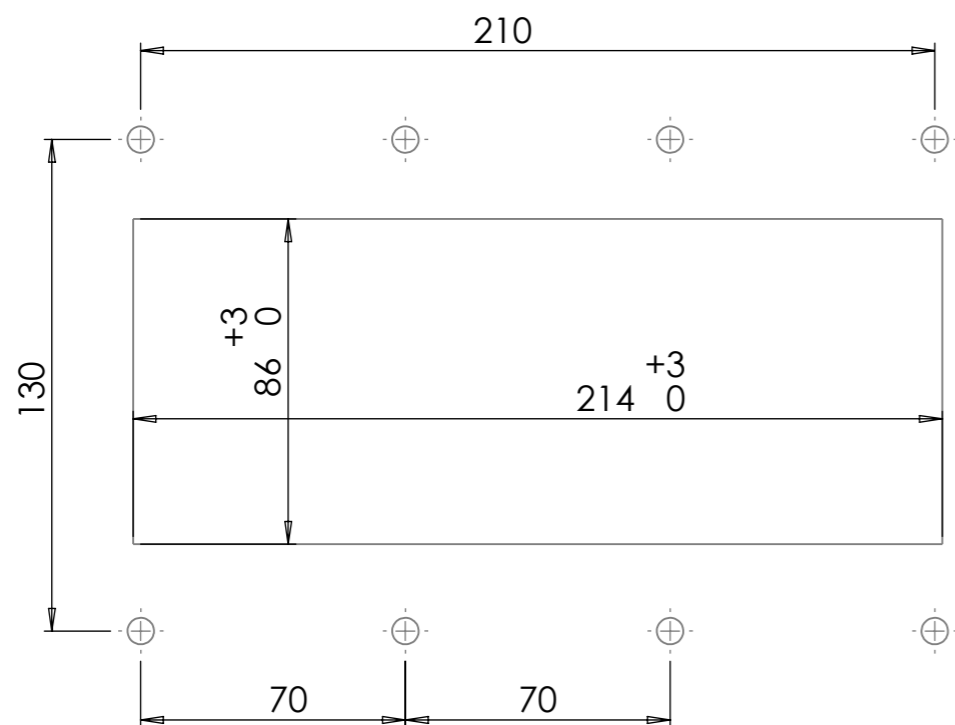
THIS DOCUMENT MUST NOT BE COPIED WITHOUT  
 OUR WRITTEN PERMISSION, AND THE CONTENTS  
 THEREOF MUST NOT BE IMPARTED TO A THIRD  
 PARTY NOR BE USED FOR ANY UNAUTHORISED  
 PURPOSE. CONTRAVENTION WILL BE PROSECUTED.



| REVISIONS |             |            |           |
|-----------|-------------|------------|-----------|
| REV.      | DESCRIPTION | DATE       | SIGNATURE |
| A         |             | 2024-05-24 | SS        |



CUT OUT



|                |                 |                      |                     |  |  |  |                |
|----------------|-----------------|----------------------|---------------------|--|--|--|----------------|
| Ritad<br>Drawn | Kontr.<br>Check | Granskad<br>Reviewed | Godkänd<br>Approved | Tolerans där ej annat anges<br>Tolerance unless<br>otherwise not stated.<br>ISO 2768-m | Smst. nr.<br>Assembly drawing no.<br>1240202 | Ersätter<br>Replaces   | E              |
| SS             | PB              | OF                   | JF                  | Ytjämnhet där ej annat anges.<br>Surface finish otherwise not stated.                  | Material<br>ALUMINIUM                        | Ersatt av<br>Replaced of   | Vikt<br>Weight |
| 240513         | 240528          | 240529               | 240529              |  |  | Alla mått och uppgifter avser färdig produkt om ej annat anges<br>All measures and other information refer to finished products unless otherwise not stated. |                |
|                |                 |                      |                     | ALF-90+90x2 w40<br>INFORMATION DRAWING   |  | Kund ordernr.<br>Customer order no   |                |
|                |                 |                      |                     |  |  | Ritn. nr.<br>Draw. no.<br>1240194  | Rev.<br>A      |