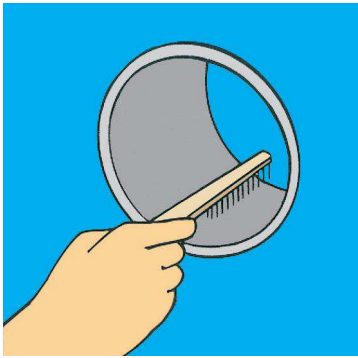
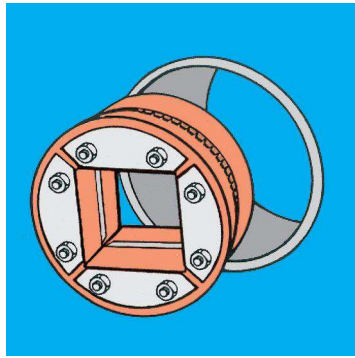


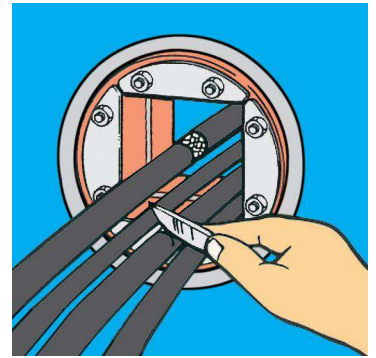
# Installation E-RGP



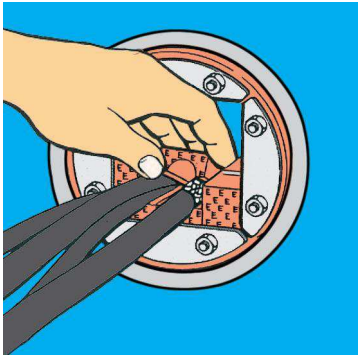
**1**  
Thoroughly clean the inside of the frame. Check that frame dimensions agree with stated tolerances.



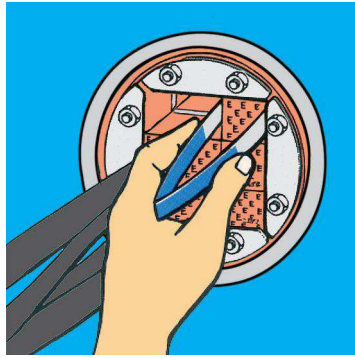
**2**  
Place the E-RGP in the correct position in the opening.



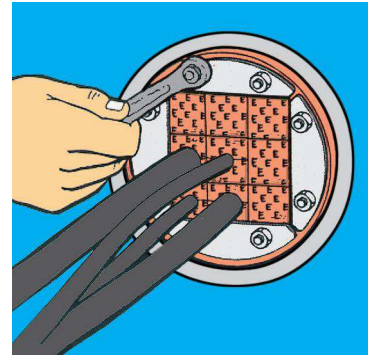
**3**  
Pull the cables to final position. Mark cable 30 mm from front edge of frame. Remove cable sheath 5 mm on either side of the line.



**4**  
When packing the transit, ensure all the insert blocks have "E" markings thread is visible.



**5**  
Tweezers can be used, if required, to aid installation of last row of blocks.



**6**  
Tighten the nuts so that 10-12 mm of the protruding thread is visible.

---

## PRESSURE APPLICATIONS E-RGP

Clean the inside of the pipe and the outside of the E-RGP prior to installation, but apply no lubricant to either surface.

Lubricate all the Lycron parts carefully with the MCT Brattberg lubricant.

The E-RGP seal may not be pressurized within 48 hours of installation - this allows for the settlement of the system (based on a 20°C ambient temperature). NOTE. The lower the temperature, the longer the needed settlement time.

---