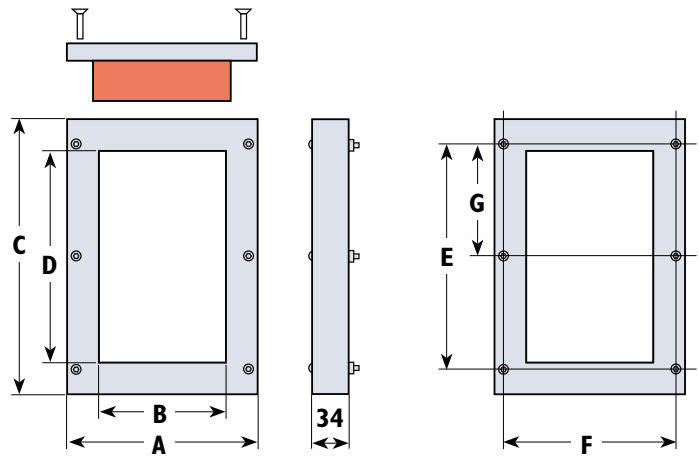


X-Series cable transit

Frames

Specification

- Polyester glass filled compression moulding
- UV stabilised material with low smoke index
- Ultra-low weight
- High strength



Frames supplied with:

- Compression screws (M6 countersunk head)
- Compression system
- Gasket
- Optional extras include Adaptor Flange, Blanking Plate and Allen key. Details on request.

Sizes

Type	A	B	C	D
X1	178	120	260	200
X2	118	60	210	150

Fixing Hole Dimensions

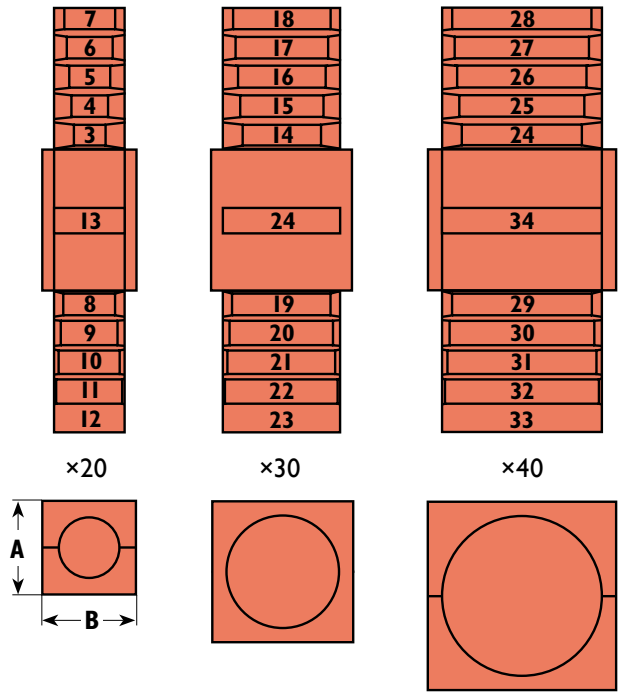
Type	E	F	G
X1 (6 holes M6 clearance)	215	160	107.5
X2 (4 holes M6 clearance)	130	88	210

Measurements in millimetres.
N.B. Multiple frames are available.
Details on request.

Testing

- Fire** BS 476 Pt 20 1 hr integrity
- Pressure** IP 67
- Vibration** Available on request
- UV** Available on request
- Temperature Range** Available on request
- Chemical Resistance** Available on request

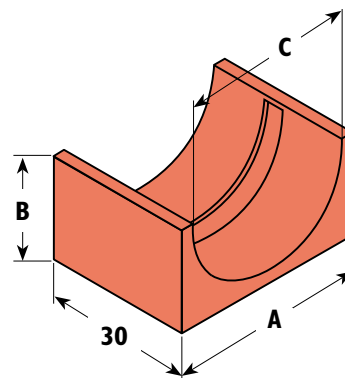
Sizing Cables



Blocks

Block size	Width	Height	Cable/Pipe Size
	A	B	C
X20/3-13	20	10	2.5-13.5
X30/14-24	30	15	13.5-24.5
X40/24-34	40	20	23.5-34.5

Measurements in millimetres.
 N.B. Sold as complete block sealed
 (2 half blocks & plug).

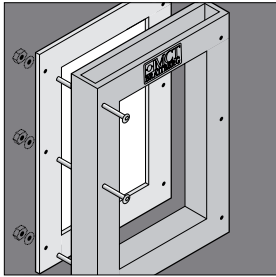


Staybars

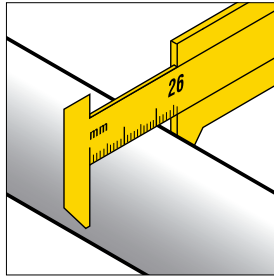
Stainless steel 3 mm diameter available in 2 sizes:

- Type 1** 120 mm long ref SB 120
- Type 2** 60 mm long ref SB 60

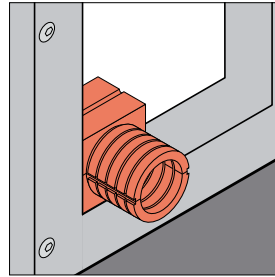
N.B. For pressure installation lubricate all components liberally.



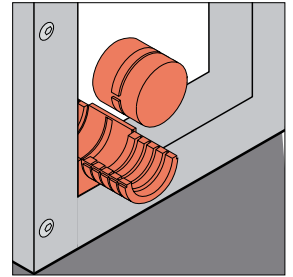
1 Fix frame to opening using gasket and M6 screws supplied.



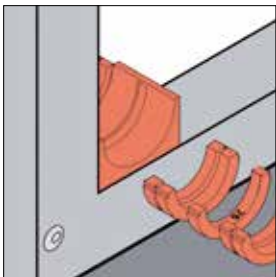
2 Measure cable. In this example cable has a diameter of 26 mm.



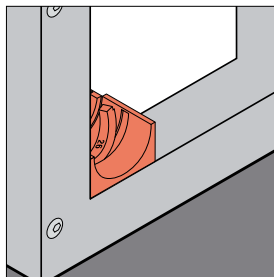
3 Once cable is sized select appropriate block.



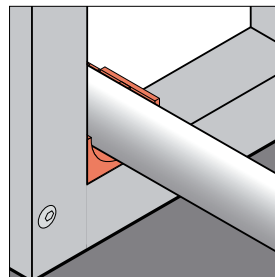
4 Remove top half of block and plug.



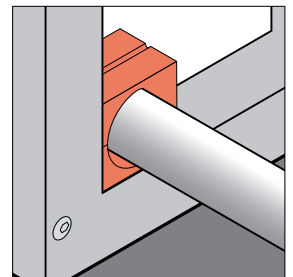
5 Detach sealing rings from main block and retain ring corresponding to measured cable size. In this example 26 mm.



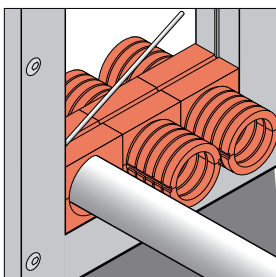
6 Place the 26 mm sealing ring in centre groove of block.



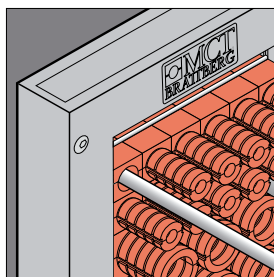
7 Place cable on block.



8 Replace top of block to encase cable.



9 If more cables are required repeat the sequence. If not insert blanks to complete row and insert staybar to secure.



10 Build up frame repeating the process described in steps 2-9. In this example 2 more cables have been added using other block sizes.



11 Insert compression system and tighten using allen key.